



■ Some of the photos may include optional equipment.

HYUNDAI LPG/GASOLINE FORKLIFT TRUCKS **Applied Tier 4 Engine**

## 25/30/33L-7A

 **HYUNDAI**  
**MATERIAL HANDLING**

North American Headquarters  
6100 Atlantic Blvd, Norcross, GA 30071  
TEL (678) 823 7777 FAX (687) 823 7778

PLEASE CONTACT

[www.hyundaiforkliftamericas.com](http://www.hyundaiforkliftamericas.com) 2018.04 Rev.2

 **HYUNDAI**  
**MATERIAL HANDLING**



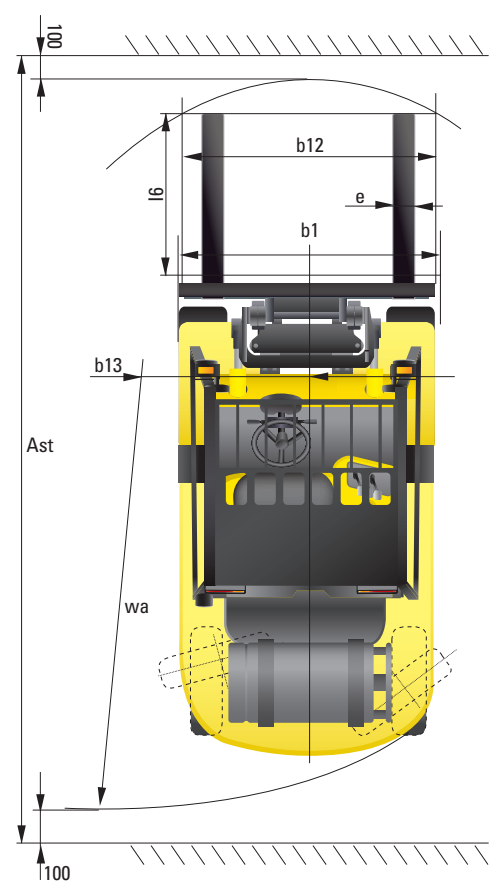
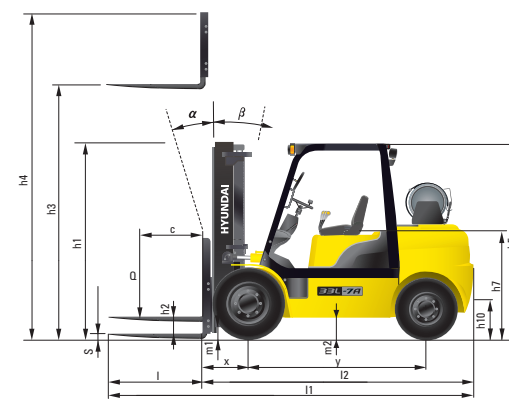
# NEW criteria of Forklift Trucks

Hyundai introduces a new line of 7A series LPG forklift trucks. Excellent power and performance with great fuel efficiency, provides a best in value proposition for your business!



When operator is not in seat, the hydraulic lift and tilt controls and travel are locked out.

## Dimension

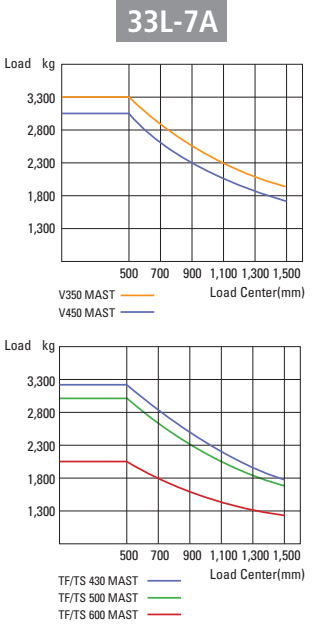
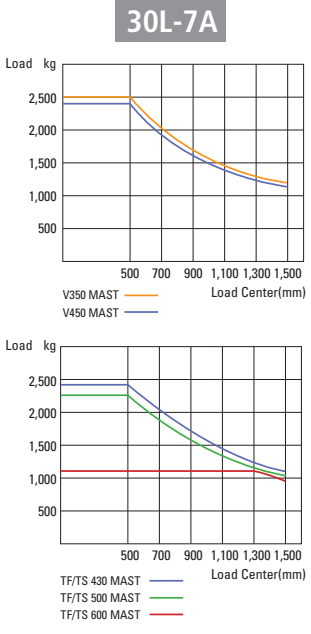
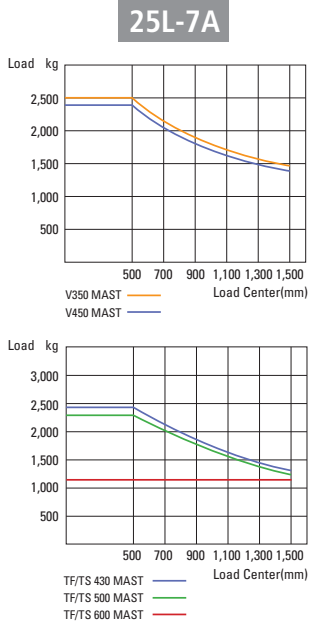


## Specification

Identification			
1.1	Manufacturer	Hyundai	Hyundai
1.2	Manufacturer's type designation	25L-7A	30L-7A
1.3	Drive: electric (battery or mains), diesel, fuel gas, manual	LP	LP
1.4	Type of operation: hand, pedestrian, standing, seated, order-picker	seated	seated
1.5	Load capacity / rated load	Q (lb)	5,000
1.6	Load center distance	c (inch)	24
1.8	Load distance, center of drive axle to fork	x (inch)	18.4
1.9	Wheelbase	y (inch)	65.0
Weights			
2.1	Service weight	lb	8,170
2.2	Axle loading, loaded front / rear	lb	12,020 / 1,660
2.3	Axle loading, unloaded front / rear	lb	3,276 / 4,894
Wheels, Chassis			
3.1	Tires: solid rubber, superplastic, pneumatic, polyurethane	Pneumatic	Pneumatic
3.2	Tires size, front	7.00 - 12 - 12PR	8.15 x 15 - 14PR
3.3	Tires size, rear	6.50 - 10 - 12PR	6.50 - 10 - 12PR
3.5	Wheels, number front x rear (x = driven wheels)	2 x 2	2 x 2
3.6	Track width, front	b10 (inch)	38
3.7	Track width, rear	b11 (inch)	38.5
Basic Dimensions			
4.1	Mast / fork carriage tilt forward / backward ( $\alpha / \beta$ )	degrees	6 / 10
4.2	Lowered mast height	h1 (inch)	85.6
4.3	Free lift	h2 (inch)	6.1
4.4	Lift height	h3 (inch)	129.9
4.5	Extended mast height	h4 (inch)	176.6
4.7	Overhead load guard (cab) height	h5 (inch)	85.0
4.8	Seat height / standing height	h7 (inch)	43.7
4.12	Coupling height	h10 (inch)	11.1
4.19	Overall length	l1 (inch)	143.5
4.20	Length to face of forks	l2 (inch)	103.1
4.21	Overall width	b1 (inch)	45.7
4.22	Fork dimensions	l / e / s (inch)	41.3 x 3.9 x 1.7
4.23	Fork Carriage ITA Class	II	III
4.24	Fork-carriage width	b12 (inch)	43.3
4.31	Ground clearance, loaded, under mast	m1 (inch)	5.1
4.32	Ground clearance, centre of wheelbase	m2 (inch)	6.7
4.33	Aisle width for pallets 1000 x 1200 crossways	Ast (inch)	156.1
4.34	Aisle width for pallets 800 x 1200 lengthways	Ast (inch)	164.0
4.35	Turning radius	Wa (inch)	90.5
4.36	Smallest pivot point distance	b13 (inch)	28.1
Performance Data			
5.1	Travel speed, Unloaded	mph	11
5.2	Lift speed, Loaded/Unloaded	ft/min	118/120
5.3	Lowering speed, Loaded/Unloaded	ft/min	98.5/88.5
5.5	Drawbar pull, Loaded	lb	5,318
5.7	Gradient performance, Loaded	%	37.1
5.9	Acceleration time, loaded/unloaded (10m)	sec	NA
5.10	Service brake		Hydraulic
Engine			
6.1	Engine manufacturer / type	HMC L4KB	HMC L4KB
6.2	Engine power acc. to ISO 1585 (LP)	kW	59 (47.8)
6.3	Rated speed	1/min	2,300
6.4	No. of cylinder / cubic capacity	/cm <sup>3</sup>	4 / 2,359
Other Details			
8.2	Type of drive control	Power Shift	Power Shift
8.3	Operating pressure	bar	220 / 165
8.4	Oil volume	l	30
8.5	Noise	db(A)	80



Load Capacity



Optional Items

- CABIN & HEATER
- SIDE SHIFT / INTEGRAL SIDE SHIFT
- FORK (L x W x T) (mm)  
25L-7A  
900 x 100 x 45    1,000 x 100 x 45    1,050 x 100 x 45  
1,200 x 100 x 45    1,350 x 100 x 45    1,500 x 100 x 45  
1,650 x 100 x 45    1,800 x 100 x 45

- 30/33L-7A  
900 x 122 x 45    1,050 x 122 x 45    1,150 x 122 x 45  
1,200 x 122 x 45    1,350 x 122 x 45    1,500 x 122 x 45  
1,650 x 122 x 45    1,800 x 122 x 45    1,970 x 122 x 45  
2,120 x 122 x 45    2,300 x 122 x 45    2,400 x 122 x 45
- TILTING : 6/6°, 3/3°
- TIRE : No-marking, Double

- LPG TANK CLAMP : Swing Out, Swing Down
- M.C.V : 4-Spool
- ATTACH PIPING : 3 Spool-piping, 4 Spool-piping
- HAZARD SWITCH
- BEACON LAMP / WORK LAMP
- TRAVEL SPEED CONTROL SENSOR
- PRECLANER



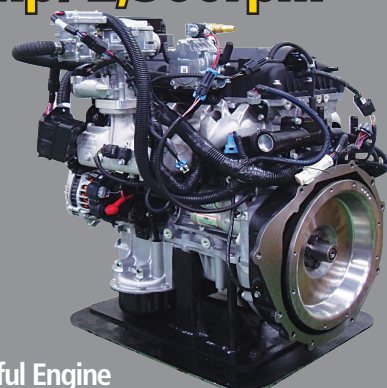
Some of the photos may include optional equipment.



# The new master on the job-site!

Smooth running, efficient and ergonomically designed, 25/30/33L-7A are designed to meet the demands of most any jobsite!

## 59 hp/ 2,300rpm



### Powerful Engine HMC L4KB(2.4L) Engine

The high quality Hyundai Motor Company L4KB engine ensures incomparable performance, durability and value. Powerful and efficient engine provides excellent fuel consumption and torque. (47.8 hp/2,300rpm) (EPA/CARB Tier-IV Certified)

### Fast and Stable Performance

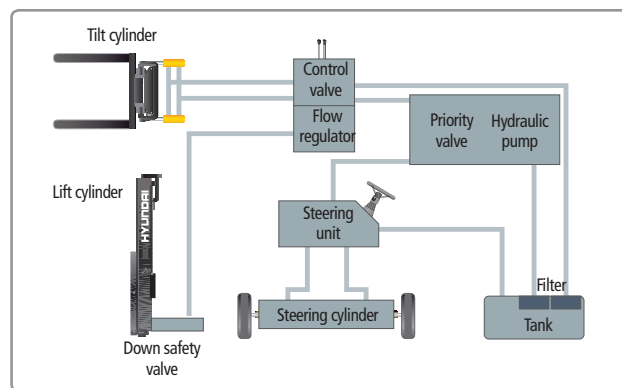
Responsible hydraulic controls safely enhance productivity. As the forks are being lowered, a down-control valve maintains a controlled descent speed. The down-safety valve prevents forks from dropping down in case of sudden damage of hydraulic line.



## Mast Specification - 33L-7A

Mast Type	Maximum Fork Height		Overall Height Lowered		FREE LIFT						Tilt Angle		Load capacity w/o integral side shift		Load capacity w/integral side shift		TRUCK WEIGHT UNLOAD				
	in	mm	in	mm	with bkr		w/o bkr		w/o bkr (3/4-SPOOL)		Fwd deg	Bwd deg	Single Tire	Double Tire	Single Tire	Double Tire	Single Tire		Double Tire		
					mm	in	mm	in	mm	in			24 in LC	24 in LC	24 in LC	24 in LC	lb	kg	lb	kg	
2-STAGE LIMITED FREE LIFT	V300	118.1	3000	83.1	2110	155	6.1	155	6.1	155	6.1	6	10	6500	6500	6500	6500	9733	4415	9947	4512
	*V330	129.9	3300	89.0	2260	155	6.1	155	6.1	155	6.1	6	10	6500	6500	6500	6500	9785	4439	9999	4536
	V350	137.8	3500	92.9	2360	155	6.1	155	6.1	155	6.1	6	10	6500	6500	6500	6500	9820	4454	10034	4551
	V370	145.7	3700	98.8	2510	155	6.1	155	6.1	155	6.1	6	10	6500	6500	6500	6500	9872	4478	10086	4575
	V400	157.4	4000	104.7	2660	155	6.1	155	6.1	155	6.1	6	10	6500	6500	6500	6500	9943	4510	10157	4607
	V430	169.3	4300	110.6	2810	155	6.1	155	6.1	155	6.1	6	6	6500	6500	6500	6500	10061	4564	10275	4661
	V450	177.2	4500	116.5	2960	155	6.1	155	6.1	155	6.1	6	6	6500	6500	6500	6500	10113	4587	10327	4684
2-STAGE FULL	V470	185.0	4700	120.5	3060	155	6.1	155	6.1	155	6.1	6	6	6500	6500	6500	6500	10148	4603	10362	4700
	V500	196.9	5000	126.4	3210	155	6.1	155	6.1	155	6.1	6	6	6500	6500	6460	6500	10200	4627	10414	4724
	VF295	116.1	2950	83.1	2110	930	36.6	1384	54.5	1384	54.5	6	6	6500	6500	6500	6500	9830	4459	10031	4550
	VF325	127.9	3250	89.0	2260	1080	42.5	1534	60.4	1534	60.4	6	6	6500	6500	6500	6500	9908	4494	10109	4585
	TF370	145.7	3700	74.4	1890	710	28.0	1069	42.1	1069	42.1	6	6	6500	6500	6500	6500	10144	4602	10345	4693
	TF400	157.4	4000	78.3	1990	810	31.9	1169	46.0	1169	46.0	6	6	6500	6500	6500	6500	10193	4624	10394	4715
	TF430	169.3	4300	82.3	2090	910	35.8	1269	50.0	1269	50.0	6	6	6500	6500	6500	6500	10239	4644	10440	4735
3-STAGE FULL FREE LIFT	TF450	177.2	4500	86.2	2190	1010	39.8	1369	53.9	1369	53.9	6	6	6500	6500	6430	6500	10287	4666	10488	4757
	TF470	185.0	4700	88.2	2240	1060	41.7	1419	55.9	1419	55.9	6	6	6500	6500	6390	6500	10317	4680	10517	4771
	TF500	196.9	5000	92.1	2340	1160	45.7	1519	59.8	1519	59.8	6	6	6480	6500	6260	6500	10366	4702	10567	4793
	TF550	216.5	5500	100	2540	1360	53.5	1719	67.7	1719	67.7	6	6	4400	6500	4190	6390	10463	4746	10664	4837
	TF600	236.2	6000	107.9	2740	1560	61.4	1919	75.6	1919	75.6	6	6	2420	6390	2200	6170	10623	4818	10823	4909
	TS370	145.7	3700	74.4	1890	710	28.0	1069	42.1	1069	42.1	6	6	6500	6500	6500	6500	10144	4602	10345	4693
	TS400	157.4	4000	78.3	1990	810	31.9	1169	46.0	1169	46.0	6	6	6500	6500	6500	6500	10193	4624	10394	4715
	TS430	169.3	4300	82.3	2090	910	35.8	1269	50.0	1269	50.0	6	6	6500	6500	6500	6500	10239	4644	10440	4735
	TS450	177.2	4500	86.2	2190	1010	39.8	1369	53.9	1369	53.9	6	6	6500	6500	6430	6500	10287	4666	10488	4757
	TS470	185.0	4700	88.2	2240	1060	41.7	1419	55.9	1419	55.9	6	6	6500	6500	6390	6500	10317	4680	10517	4771
	TS500	196.9	5000	92.1	2340	1160	45.7	1519	59.8	1519	59.8	6	6	6480	6500	6260	6500	10366	4702	10567	4793
4-STAGE FULL FREE LIFT	TS550	216.5	5500	100	2540	1360	53.5	1719	67.7	1719	67.7	6	6	4400	6500	4190	6390	10463	4746	10664	4837
	TS600	236.2	6000	107.9	2740	1560	61.4	1919	75.6	1919	75.6	6	6	2420	6390	2200	6170	10623	4818	10823	4909
	QF610	240.7	6115	87.6	2225	1045	41.1	1449	57.0	1449	57.0	3	3	4300	6240	4080	6060	10786	4893	10955	4969
	QF660	260.4	6615	95.5	2425	1245	49.0	1649	64.9	1649	64.9	3	3	4080	5950	3860	5730	10918	4952	11086	5029
	QF700	276.2	7015	99.4	2525	1345	53.0	1749	68.9	1749	68.9	3	3	3300	5690	3080	5420	10985	4983	11153	5059
	QF745	293.9	7465	105.3	2675	1495	58.9	1899	74.8	1862	73.3	3	3	2200	5380	1980	5160	11086	5029	11255	5105
	QF790	311.6	7915	111.2	2825	1645	64.8	2015	80.7	1862	73.3	3	3	1210	2860	1100	2640	11308	5129	11476	5206

\* TS-Mast : Wide Visible 3 Stage Full Free Lift Mast with 2 Free Lift Cylinders.



### State-of-the-art Hydraulic System

The latest large-capacity hydraulic system reacts quickly during operation, and a low-noise control valve increases both efficiency and durability.



### Fully Hydrostatic Power Steering

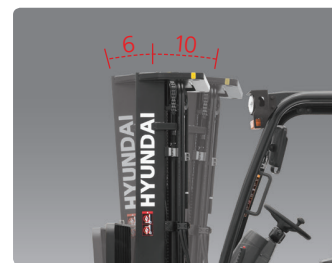
A hydraulic steering system always guarantees smooth and flexible steering, preventing overrun and kick-back.



**Mast Specification - 30L-7A**

Mast Type	Maximum Fork Height		Overall Height Lowered		FREE LIFT						Tilt Angle		Load capacity w/o integral side shift		Load capacity w/integral side shift		TRUCK WEIGHT UNLOAD				
	in	mm	in	mm	with bkr		w/o bkr		w/o bkr (3/4-SPOOL)		Fwd deg	Bwd deg	Single Tire	Double Tire	Single Tire	Double Tire	Single Tire		Double Tire		
					in	mm	in	mm	in	mm			lb	lb	lb	lb	lb	kg	lb	kg	
2-STAGE LIMITED FREE LIFT	V300	118.1	3000	80.3	2040	6.1	155	6.1	155	6.1	155	6	10	6000	6000	6000	6000	9205	4175	9555	4334
	*V330	129.9	3300	86.2	2190	6.1	155	6.1	155	6.1	155	6	10	6000	6000	6000	6000	9250	4196	9599	4354
	V350	137.8	3500	90.2	2290	6.1	155	6.1	155	6.1	155	6	10	6000	6000	6000	6000	9289	4213	9638	4372
	V370	145.7	3700	96.1	2440	6.1	155	6.1	155	6.1	155	6	10	6000	6000	6000	6000	9339	4236	9689	4395
	V400	157.4	4000	102.0	2590	6.1	155	6.1	155	6.1	155	6	10	6000	6000	5920	6000	9407	4267	9757	4426
	V430	169.3	4300	107.9	2740	6.1	155	6.1	155	6.1	155	6	6	5840	6000	5660	5950	9523	4320	9873	4478
	V450	177.2	4500	113.8	2890	6.1	155	6.1	155	6.1	155	6	6	5730	1900	5550	1720	9573	4342	9923	4501
	V470	185.0	4700	117.7	2990	6.1	155	6.1	155	6.1	155	6	6	5510	5790	5330	5780	9607	4358	9956	4516
	V500	196.9	5000	123.6	3140	6.1	155	6.1	155	6.1	155	6	6	4740	5680	4560	5620	9657	4380	10007	4539
2-STAGE FULL	VF295	116.1	2950	80.3	2040	33.9	860	51.7	1314	51.7	1314	6	6	6000	6000	6000	6000	9294	4216	9643	4374
	VF325	127.9	3250	86.2	2190	39.8	1010	57.6	1464	57.6	1464	6	6	6000	6000	6000	6000	9371	4251	9720	4409
	TF370	145.7	3700	72.4	1840	26.0	660	43.9	1114	38.4	975	6	6	6000	6000	5950	6060	9535	4325	9884	4483
3-STAGE FULL FREE LIFT	TF400	157.4	4000	76.4	1940	29.9	760	47.8	1214	42.3	1075	6	6	5840	6000	5780	5890	9589	4350	9937	4508
	TF430	169.3	4300	80.3	2040	33.9	860	51.7	1314	46.3	1175	6	6	5730	5880	5670	5780	9638	4372	9986	4530
	TF450	177.2	4500	84.3	2140	37.8	960	55.7	1414	52.2	1325	6	6	5660	5760	5560	5670	9694	4397	10042	4555
	TF470	185.0	4700	86.2	2190	39.8	1010	57.6	1464	52.2	1325	6	6	5400	5660	5220	5480	9725	4411	10073	4569
	TF500	196.9	5000	90.2	2290	43.7	1110	61.6	1564	56.1	1425	6	6	4630	5510	4450	5330	9774	4434	10123	4592
	TF550	216.5	5500	98.0	2490	51.6	1310	69.4	1764	65.9	1675	6	6	3040	5290	2860	5110	9871	4478	10220	4636
	TF600	236.2	6000	105.9	2690	59.4	1510	77.3	1964	73.8	1875	6	6	2020	4630	1840	4450	10026	4548	10374	4706
	TS370	145.7	3700	72.4	1840	26.0	660	43.9	1114	41.5	1053	6	6	6000	6000	5950	6060	9535	4325	9884	4483
	TS400	157.4	4000	76.4	1940	29.9	760	47.8	1214	45.4	1153	6	6	5840	6000	5780	5890	9589	4350	9937	4508
	TS430	169.3	4300	80.3	2040	33.9	860	51.7	1314	49.3	1253	6	6	5730	5880	5670	5780	9638	4372	9986	4530
	TS450	177.2	4500	84.3	2140	37.8	960	55.7	1414	55.2	1403	6	6	5660	5760	5560	5670	9694	4397	10042	4555
4-STAGE FULL FREE LIFT	TS470	185.0	4700	86.2	2190	39.8	1010	57.6	1464	55.2	1403	6	6	5400	5660	5220	5480	9725	4411	10073	4569
	TS500	196.9	5000	90.2	2290	43.7	1110	61.6	1564	59.2	1503	6	6	4630	5510	4450	5330	9774	4434	10123	4592
	TS550	216.5	5500	98.0	2490	51.6	1310	69.4	1764	69.0	1753	6	6	3040	5290	2860	5110	9871	4478	10220	4636
	TS600	236.2	6000	105.9	2690	59.4	1510	77.3	1964	76.9	1953	6	6	2020	4630	1840	4450	10026	4548	10374	4706
	QF610	240.7	6115	85.6	2175	37.6	955	57.0	1449	57.0	1449	3	3	3730	4850	3550	4590	10351	4695	10701	4854
	QF660	260.4	6615	93.5	2375	47.0	1195	64.9	1649	64.9	1649	3	3	3530	4520	3350	4280	10483	4755	10833	4914
	QF700	276.2	7015	97.4	2475	51.0	1295	68.9	1749	68.9	1749	3	3	3110	4430	2950	4190	10549	4785	10899	4944
QF745	293.9	7465	103.3	2625	56.9	1445	74.8	1899	69.4	1762	3	3	2510	4230	2360	3990	10650	4831	11001	4990	
QF790	311.6	7915	109.3	2775	62.8	1595	75.4	1915	69.4	1762	3	3	1570	2290	1430	2070	10873	4932	11224	5091	

\* TS-Mast : Wide Visible 3 Stage Full Free Lift Mast with 2 Free Lift Cylinders.



**Increased Mast Tilting Angle**  
Utilizing the mast tilting angle of 6 degrees forward and 10 degrees backward, the operator can safely and rapidly perform loading and unloading jobs.

**Faster Travel Speed & Better Gradability**

The powerful high-output engine provides greater acceleration, better gradability and faster travel speed on any tough terrains or slopes.



**Gradability(Loaded)**  
25L-7A : 20.4°  
30L-7A : 16.6°  
33L-7A : 15.4°

**Travel Speed(Unloaded)**  
25L-7A : 11 mph  
30L-7A : 11.5 mph  
33L-7A : 11.5 mph



# Ergonomic operator friendly compartment design!

A spacious and ergonomically designed operator compartment reduces fatigue and improves operator efficiency.

## Operator Friendly Gauges and Water-resistant Monitor Panel



- 1 Parking brake lamp
- 2 Directional indicators
- 3 Fuel warning lamp
- 4 Engine oil warning lamp
- 5 Transmission oil temperature warning lamp
- 6 Battery charging warning lamp
- 7 Air cleaner filter warning light
- 8 Working light indicator
- 9 Water temperature gauge
- 10 Fuel gauge
- 11 Hour meter
- 12 Engine check lamp
- 13 Brake oil warning lamp
- 14 Seat belt warning
- 15 OPS warning



## New High Visibility for Safe Operation

The operator is able to work with increased safety and accuracy due to a wider view mast.

## Grammer Seat (STD)



Easily adjustable suspension seat, with hi-vis orange seat belt, provides great comfort, safety and durability.  
- ELR (Energy Locking Retractor) Type Seat Belt  
- Heater and Head-rest (OPT)



## Mast Specification - 25L-7A

Mast Type	Maximum Fork Height		Overall Height Lowered		FREE LIFT						Tilt Angle		Load capacity w/o integral side shift		Load capacity w/integral side shift		TRUCK WEIGHT UNLOAD				
					SINGLE		SINGLE		Single Tire	Double Tire			Single Tire	Double Tire	Single Tire	Double Tire	Single Tire	Double Tire			
	with bkr		w/o bkr		w/o bkr (3/4-SPOOL)		24 in LC	24 in LC			24 in LC	24 in LC							Single Tire	Double Tire	
	in	mm	in	mm	in	mm	in	mm	in	mm	deg	deg	lb	lb	lb	lb	lb	kg	lb	kg	
2-STAGE LIMITED FREE LIFT	V300	118.1	3000	79.7	2025	6.1	155	6.1	155	6.1	155	6	10	5000	5000	5000	5000	8127	3687	8560	3883
	*V330	129.9	3300	85.6	2175	6.1	155	6.1	155	6.1	155	6	10	5000	5000	5000	5000	8171	3706	8603	3902
	V350	137.8	3500	89.6	2275	6.1	155	6.1	155	6.1	155	6	10	5000	5000	5000	5000	8208	3723	8641	3919
	V370	145.7	3700	95.5	2425	6.1	155	6.1	155	6.1	155	6	10	5000	5000	4820	5000	8257	3745	8689	3941
	V400	157.4	4000	101.4	2575	6.1	155	6.1	155	6.1	155	6	10	4930	5000	4750	4820	8323	3775	8755	3971
	V430	169.3	4300	107.3	2725	6.1	155	6.1	155	6.1	155	6	6	4850	5000	4670	4820	8437	3827	8869	4023
	V450	177.2	4500	113.2	2875	6.1	155	6.1	155	6.1	155	6	6	4740	4938	4560	4758	8485	3849	8918	4045
V470	185.0	4700	117.1	2975	6.1	155	6.1	155	6.1	155	6	6	4630	4850	4450	4670	8517	3863	8950	4060	
V500	196.9	5000	123.0	3125	6.1	155	6.1	155	6.1	155	6	6	4400	4630	4220	4450	8566	3885	8998	4082	
2-STAGE FULL	VF295	116.1	2950	79.7	2025	33.3	845	54.2	1377	48.1	1221	6	6	5000	5000	5000	5000	8229	3732	8663	3929
	VF325	127.9	3250	85.6	2175	39.2	995	60.1	1527	54.0	1371	6	6	5000	5000	5000	5000	8302	3766	8737	3963
3-STAGE FULL FREE LIFT	TF370	145.7	3700	71.9	1825	25.4	645	46.3	1177	45.1	1146	6	6	4930	5000	4750	4820	8428	3823	8862	4020
	TF400	157.4	4000	75.8	1925	29.3	745	50.3	1277	49.1	1246	6	6	4820	4930	4640	4750	8481	3847	8915	4044
	TF430	169.3	4300	79.7	2025	33.3	845	54.2	1377	53.0	1346	6	6	4710	4850	4530	4670	8521	3865	8955	4062
	TF450	177.2	4500	83.7	2125	37.2	945	58.1	1477	58.1	1477	6	6	4540	4760	4360	4580	8569	3887	9004	4084
	TF470	185.0	4700	85.6	2175	39.2	995	60.1	1527	58.9	1496	6	6	4400	4670	4220	4490	8599	3900	9033	4097
	TF500	196.9	5000	89.6	2275	43.1	1095	64.1	1627	62.8	1596	6	6	3520	4580	3340	4400	8648	3923	9082	4120
	TF550	216.5	5500	97.4	2475	51.0	1295	71.9	1827	71.9	1827	6	6	2640	4400	2460	4220	8734	3962	9168	4159
	TF600	236.2	6000	105.3	2675	58.9	1495	79.8	2027	79.8	2027	6	6	1760	3520	1580	3340	8877	4027	9311	4224
	TS370	145.7	3700	71.9	1825	25.4	645	46.3	1177	41.5	1053	6	6	4930	5000	4750	4820	8428	3823	8862	4020
	TS400	157.4	4000	75.8	1925	29.3	745	50.3	1277	45.4	1153	6	6	4820	4930	4640	4750	8481	3847	8915	4044
	TS430	169.3	4300	79.7	2025	33.3	845	54.2	1377	49.3	1253	6	6	4710	4850	4530	4670	8521	3865	8955	4062
	TS450	177.2	4500	83.7	2125	37.2	945	58.1	1477	55.2	1403	6	6	4540	4760	4360	4580	8569	3887	9004	4084
	TS470	185.0	4700	85.6	2175	39.2	995	60.1	1527	55.2	1403	6	6	4400	4670	4220	4490	8599	3900	9033	4097
TS500	196.9	5000	89.6	2275	43.1	1095	64.1	1627	59.2	1503	6	6	3520	4580	3340	4400	8648	3923	9082	4120	
TS550	216.5	5500	97.4	2475	51.0	1295	71.9	1827	69.0	1753	6	6	2640	4400	2460	4220	8734	3962	9168	4159	
TS600	236.2	6000	105.3	2675	58.9	1495	79.8	2027	76.9	1953	6	6	1760	3520	1580	3340	8877	4027	9311	4224	
4-STAGE FULL FREE LIFT	QF610	240.7	6115	85.0	2160	39.3	997	59.5	1512	57.6	1462	3	3	3310	3810	3170	3520	9341	4237	9773	4433
	QF660	260.4	6615	92.9	2360	47.1	1197	67.4	1712	65.4	1662	3	3	3110	3590	2950	3420	9471	4296	9903	4492
	QF700	276.2	7015	96.8	2460	51.1	1297	71.3	1812	69.4	1762	3	3	2910	3510	2780	3310	9539	4327	9971	4523
	QF745	293.9	7465	102.8	2610	57.0	1447	75.4	1915	69.4	1762	3	3	2290	3310	2160	3150	9641	4373	10073	4569
QF790	311.6	7915	108.7	2760	62.9	1597	75.4	1915	69.4	1762	3	3	1480	2090	1370	1920	9861	4473	10293	4669	

\* TS-Mast : Wide Visible 3 Stage Full Free Lift Mast with 2 Free Lift Cylinders.



**Ergonomically Positioned Pedals**  
The accelerator, brake and inching pedals are positioned to optimize operator comfort and productivity.



**Cup Holder & Console Box**  
Additional storage spaces are located inside the operating space for operator's convenience.



**Quick Response of Operating Control Levers**  
Easy to operator levers for precise and safe control of the load.



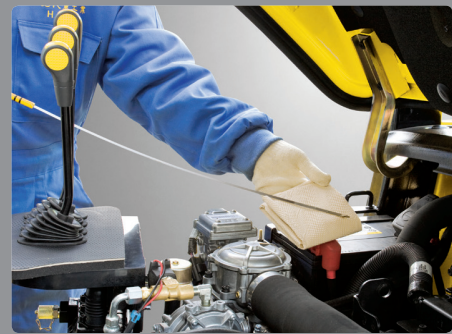
## Designed for quick and easy service!

An ideal arrangement of component parts ensures easy access and convenience for maintenance.

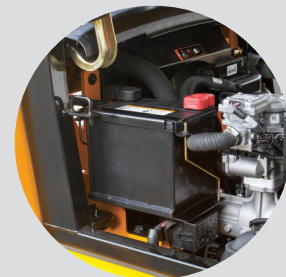
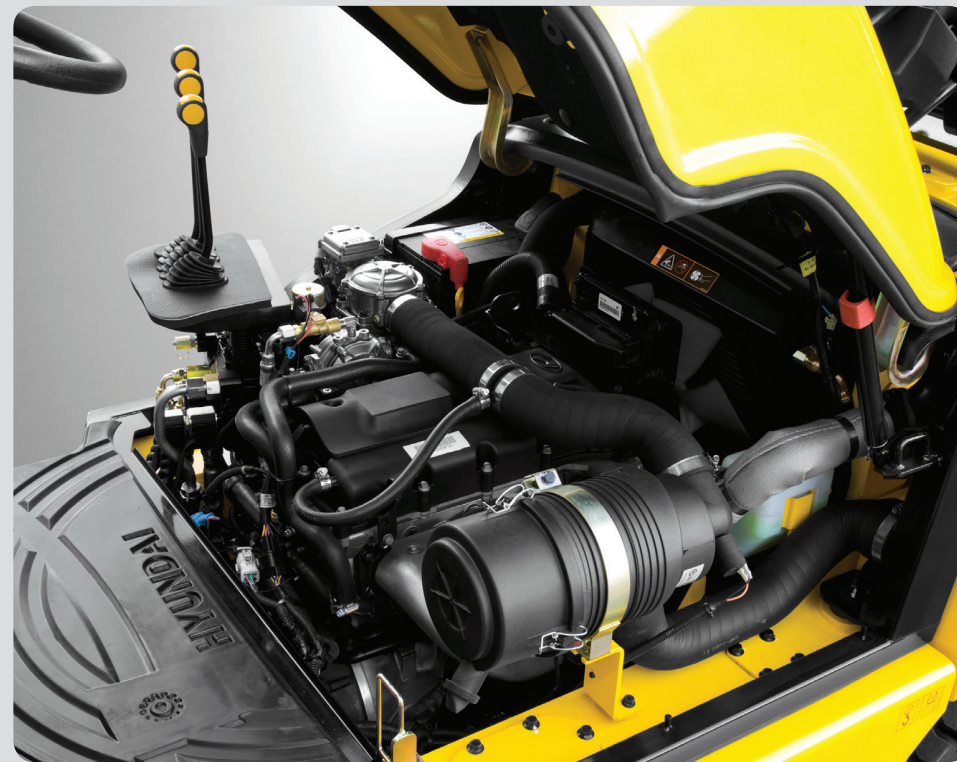


### Easy Change Air Cleaner

The air filter is readily accessible for cleaning or replacement. (6inch Cyclone Type)



### Fast Service Access for Daily Fluids Check



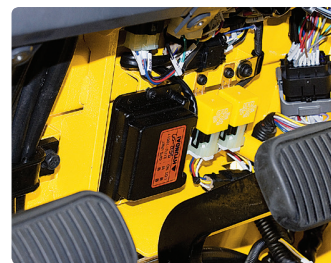
### Rotational Battery Installation



### One Touch, No Tool Floor Plate

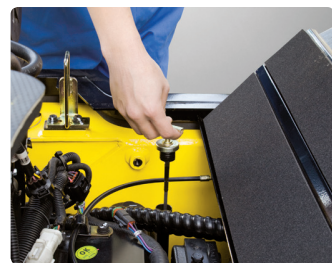


### Removable Side Panels for Ease of Service



### Improvement in Maintenance of Electric Parts

Various electric parts are centralized in dash board resulting in effortless troubleshooting.



### Easy Maintenance Oil Check

The T/M oil level can be checked easily without any disassembly.



### Brake Fluid Reservoir with Level Switch

When brake oil level become lower than Min. the warning lamp on the cluster lights on.



### An Accessible, Compact Fuse Box for Easy Inspection



### Adjustable Steering Wheel

Steering wheel with horn button can be adjusted by a lever on the right-hand side for the most comfortable operator position.



### Easy and Safe Shift Lever

A single lever on the left side of the steering column gives the operator fast, easy control of direction. The lever must be in the neutral position before the engine can be started.



### Secondary Horn

A Secondary Horn gives access to lights and horn



## Durability and reliability built in!

Safety and durability are priorities in design of the equipment.



### Strong Overhead Guard

The safety overhead guard meets ISO 6055 regulation and protects the operator during hazardous jobs.



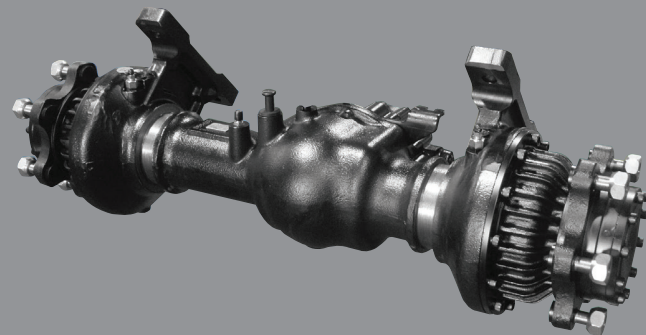
### Parking Brake

Ratchet type parking brake requires less effort from the operator to set.



### Highly Durable Drive Axle with Wet Disc Brakes

The wet disc brake system is virtually maintenance free and the enclosed design protects from dust and water.



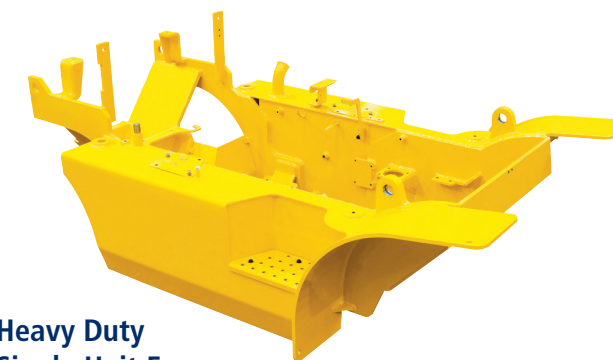
### Large Footboard & Hand Grip

Wide "open" step offers convenience and safety when entering and exiting truck.



### Expansion Bellows

The expansion bellows absorbs vibration and reduces noise generated from the exhaust gas system and also extends the life cycle of exhaust gas system.



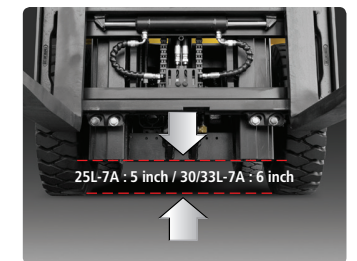
### Heavy Duty Single Unit Frame

Heavy duty single unit type frame, designed on the basis of accurate structural analysis, guarantees durability and safety.



### Bright, Protected Headlights

Bright, Protected head lights are positioned for exceptional visibility.



### Ground Clearance

The engine and transmission are assembled horizontally and positioned high in the frame to protect major components during operation on rugged surface.